

236 Clinton Avenue

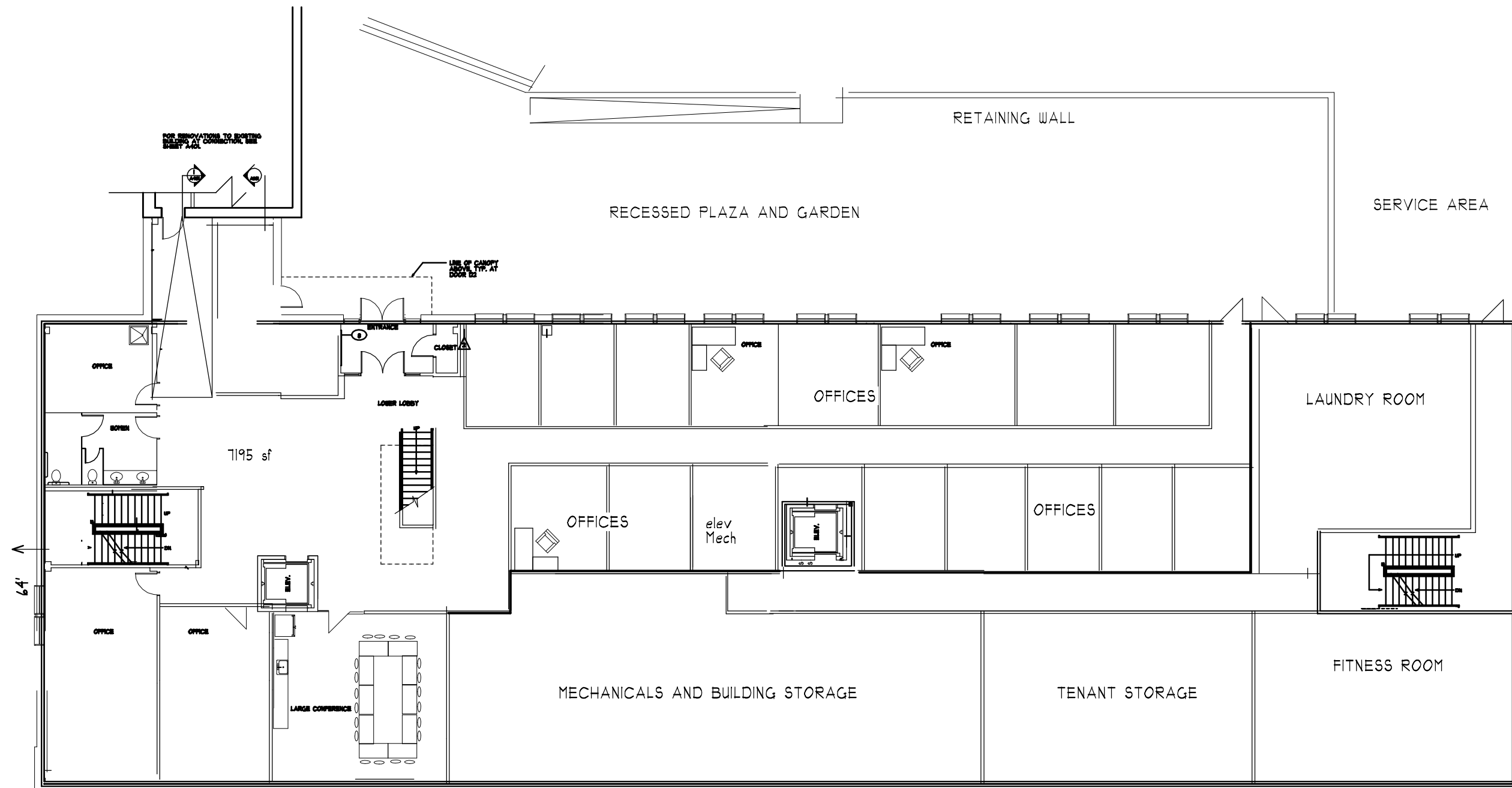
Mixed Use New Construction

Troy Architecture Practice: May 2020

Initial concept drawings for new construction at 236 Clinton Ave., Albany. Plans continue to evolve.

Project includes residential units, retail commercial space (including micro space), offices, training facilities and drop in child care space.





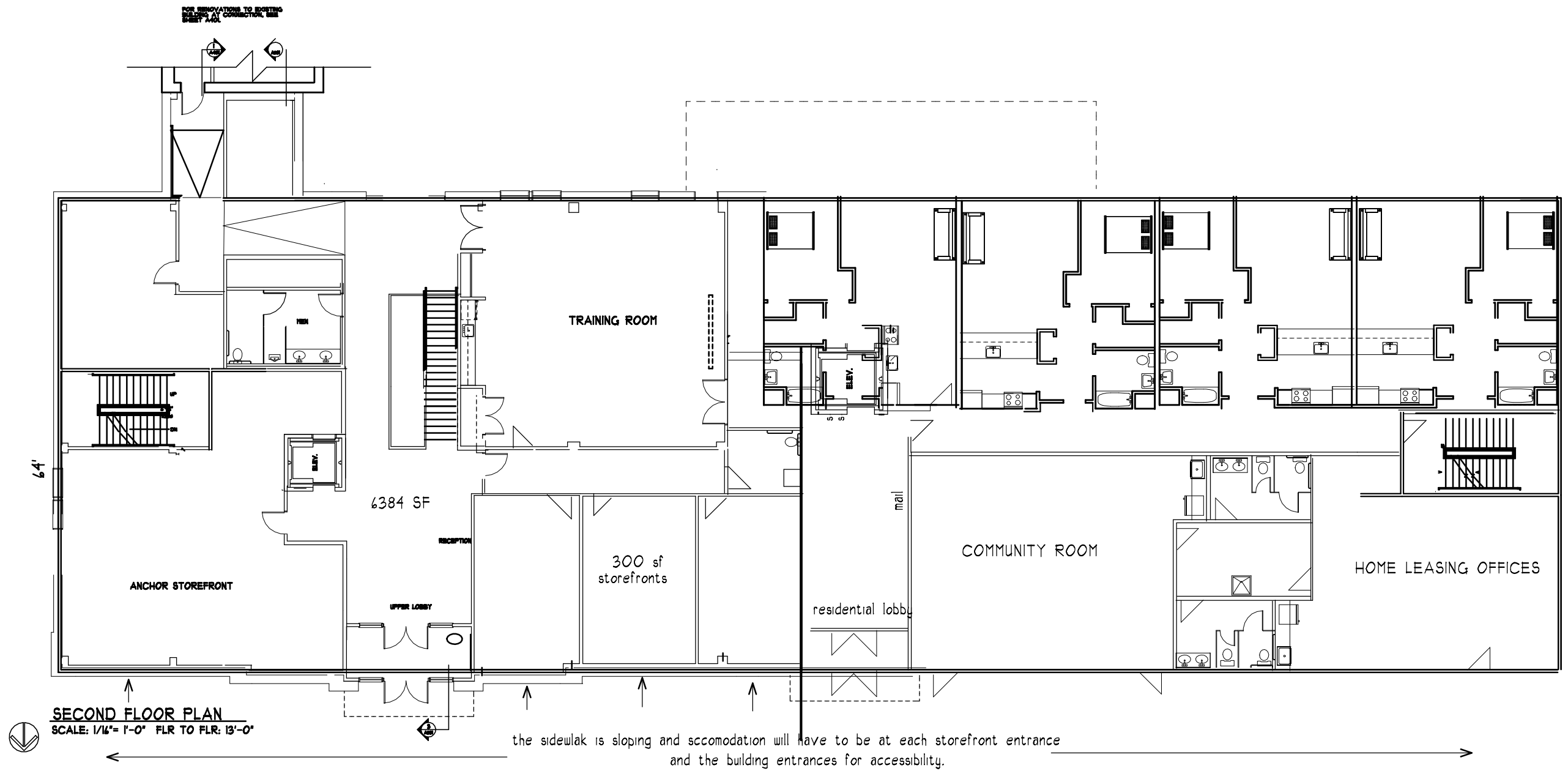
FIRST FLOOR PLAN
 SCALE: 1/16" = 1'-0" FLR TO FLR: 1/8" = 1'-0"



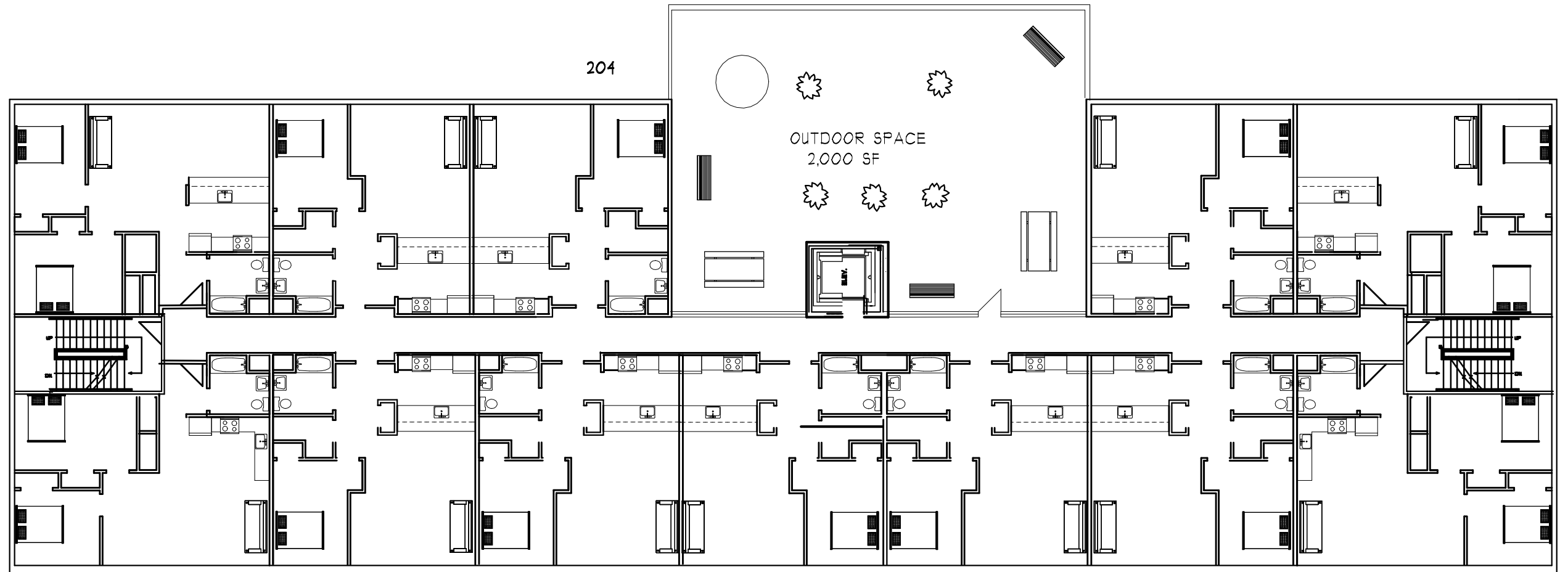
GROUND FLOOR

14,200 for incubator total





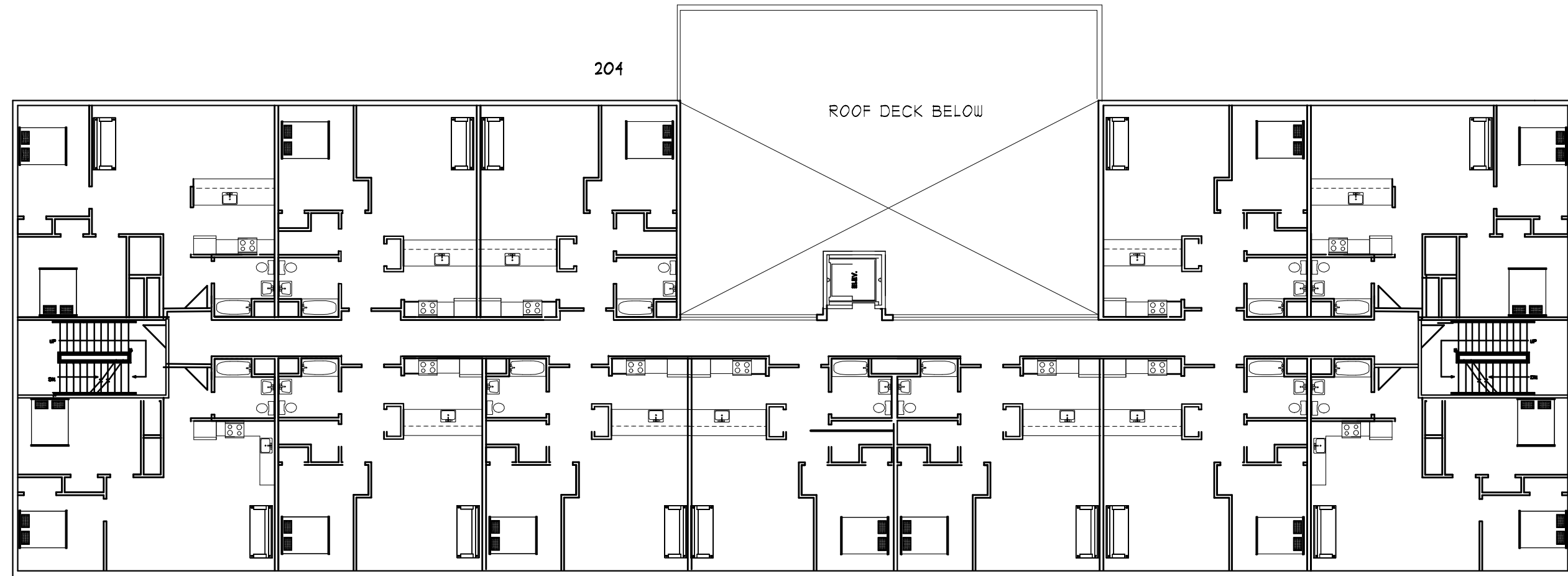
64



THIRD FLOOR PLAN

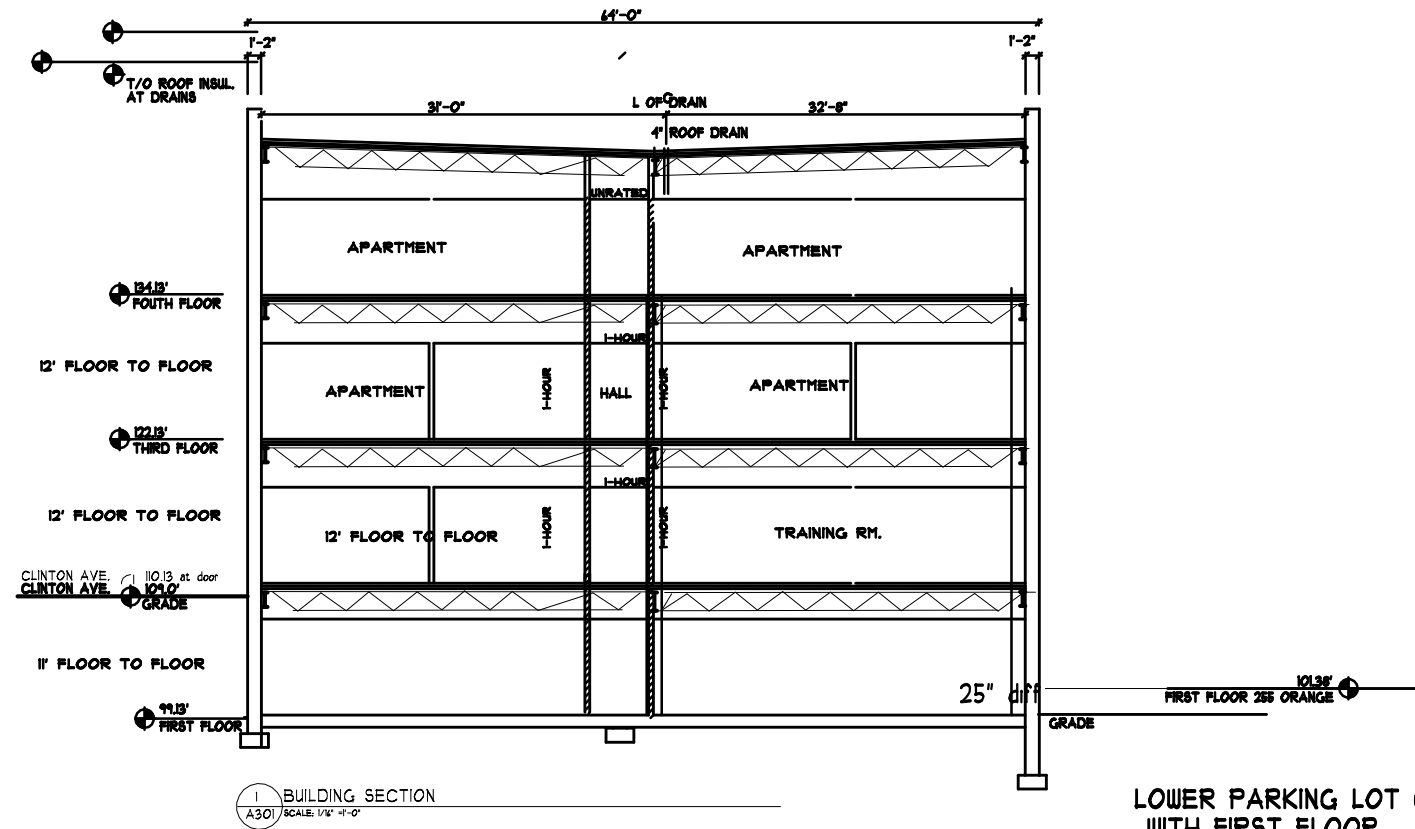
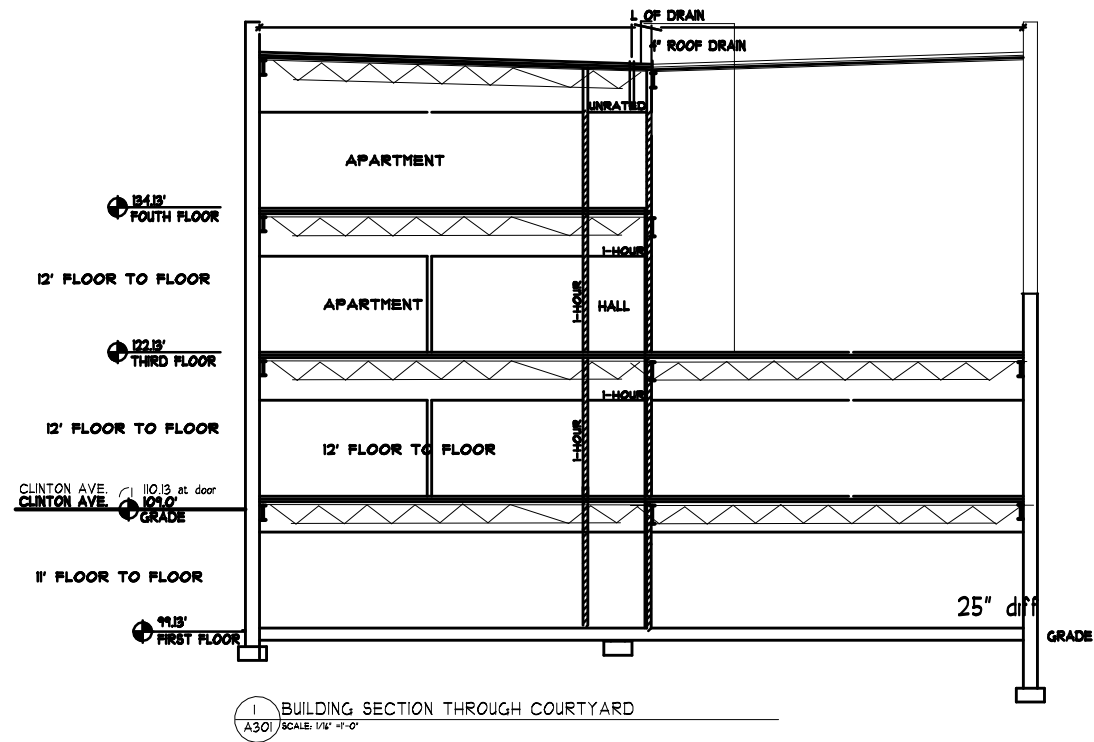
scale: 1/16" = 1'-0"

64

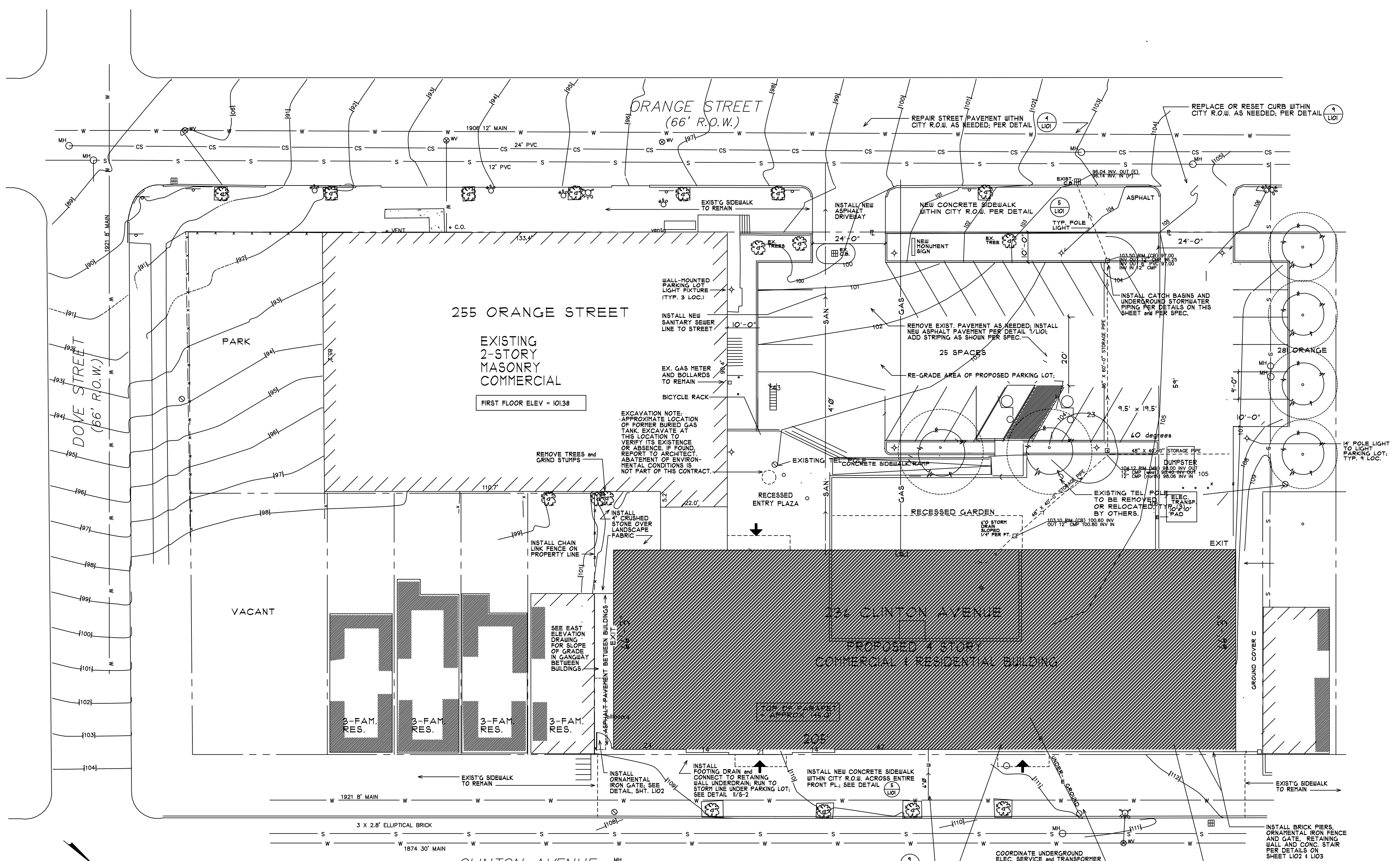


FOURTH FLOOR PLAN

scale: 1/16" = 1'-0"



LOWER PARKING LOT GRADE TO BE EVEN WITH FIRST FLOOR OF 255 ORANGE OR SOME COMBINATION OF RETAINING WALLS AND REGRADING



CONCEPTUAL SITE PLAN
 SCALE: 1" = 20'-0" 6/21/19

255 ORANGE STREET
 EXISTING
 2-STORY
 MASONRY
 COMMERCIAL
 FIRST FLOOR ELEV = 10138

234 CLINTON AVENUE
 PROPOSED 4 STORY
 COMMERCIAL & RESIDENTIAL BUILDING

TOP OF PARAPET
 2' APPROX. 105.0

INSTALL FOOTING DRAIN AND
 CONNECT TO RETAINING
 WALL UNDER DRAIN, RUN TO
 STORM LINE UNDER PARKING LOT;
 SEE DETAIL 1/2'-2

INSTALL NEW CONCRETE SIDEWALK
 WITHIN CITY R.O.W. ACROSS ENTIRE
 FRONT FL.; SEE DETAIL (7.5)

COORDINATE UNDERGROUND
 ELEC. SERVICE and TRANSFORMER
 LOC. w/UTILITY CO.; SEE SHEETS
 E102 and E104 FOR DETAILS

EXCAVATION NOTE:
 APPROXIMATE LOCATION OF ABANDONED
 UTILITIES. INVESTIGATE FURTHER PRIOR
 TO REMOVAL.

EXCAVATION NOTE:
 APPROXIMATE LOCATION OF FORMER
 FILL PITS. EXCAVATE AT THIS LOCATION
 TO VERIFY EXISTENCE OR ABSENCE OF
 BURIED FUEL TANK. IF FOUND, REPORT
 TO ARCHITECT. ABATEMENT OF
 ENVIRONMENTAL CONDITIONS IS NOT
 PART OF THIS CONTRACT.

