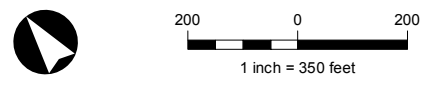
 Sheridan Hollow Pre-Nomination Study Area
 Source: Tax Parcel Boundaries provided by Albany County.



The City of Albany Department of Development & Planning provides this figure for illustrative purposes only. Unauthorized attempts to modify or utilize this figure for other than its intended purposes are prohibited. All locations are approximate. The City makes no claims or guarantees about the accuracy or currency of the contents of the data provided and expressly disclaims liability for errors and omissions in its contents.

